



Semi-Cutoff

LED Wall Pack Light

- High Performance LED Fixture 130lm/w •
- Heavy-duty Cast Aluminum Housing •
- Photocell is available •
- Easy Installation And Maintenance •
- Replacing 125W-500W Metal Halid •
- 5 Years warranty •



40W,60W,80W,100W,120W



Rugged, heavy duty die-cast aluminum housing, fully sealed to be dirt and water proof. Integrated housing with advanced thermal transmission ensures long lasting functionality even under harsh weather conditions. High quality polycarbonate lens guards against ultra-violet damage and environmental contamination.

- High Lumen Output 130 LM/W
- Optional Dusk to Dawn Photocell
- Waterproof for Indoor or Outdoor
- Easy Installation

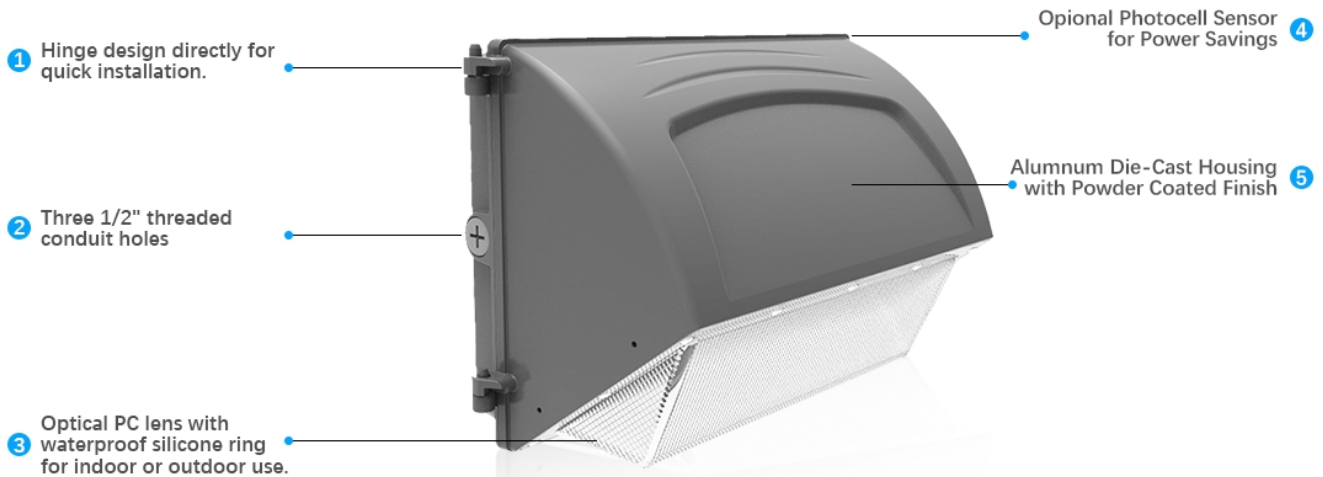
Applications

Outdoor wall mount ocations: Building exteriors, Entryways and walkways, Parking lots, Garden, Plaza, loading areas, driveways,and pathways, Security and perimeter lighting, etc



LED Wallpack Light

Product Details



Product Dimensions



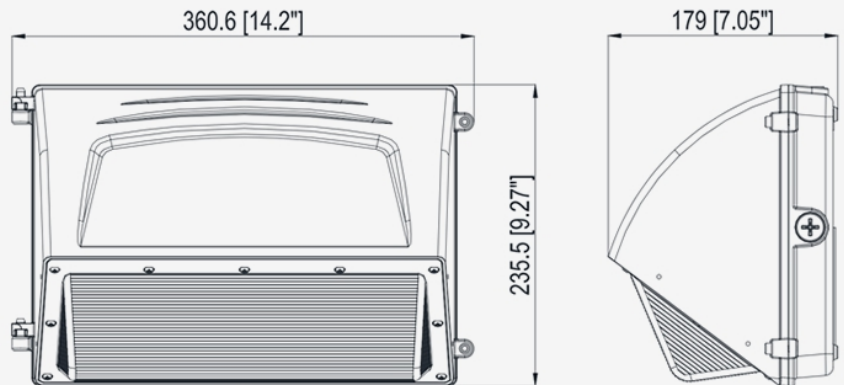
DUSK-TO-DAWN

Nighttime ON / Daytime OFF photocell with included twist-on cover cap to disable dusk-to-dawn functionality if desired.



LUMENS

This fixture's 15,600 lumens brightly illuminates a wide area without glare.



Unit: mm ["]



85% LESS ENERGY

With the latest LED technology, you will save up to 85% on energy costs when compared to traditional light fixtures.



DURABLE

Impact-resistant polycarbonate lens with die-cast aluminum housing.



NEVER CHANGE

Premium LED chips lasting over 50,000 hours (23+ years)

Dusk to Dawn Photocell



Automatic OFF



Automatic ON



DUSK TO DAWN PHOTOCELL

When at dusk, the lights will be turned on automatically.

When at dawn, the lights will be turned off automatically.



LED Wallpack Light

Specification Features

Construction

- Heavy-duty, Die-cast aluminum housing
- Durable dark bronze finish
- Same footprint as existing HID wall packs
- Operating Temperature: -20°C to 50°C

Optical System

- Impact resistant polycarbonate lens
- Removable and won't yellow or degrade.
- Delivers bright, white light and excellent uniformity

Electrical

- Voltage: 120-277V 50/60Hz driver (standard)
- Driver: Class 2, constant current, electronic power supply, factory calibrated to LED modules.
- 4KV surge protection, optional 10KV available.

Installation / Mounting

Luminaire comes standard mounting plate for quick and easy installation.

Ordering Information

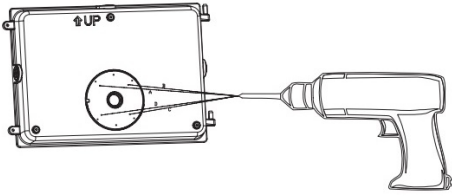
HL-WPA120XX

HL	WPA	120	X	X
Manufacturer	Type	Wattage	CCT	Photo Cell
Hitoplux	Wall Pack	120W	N:4000K/P:5000K/D:5700K	N/P

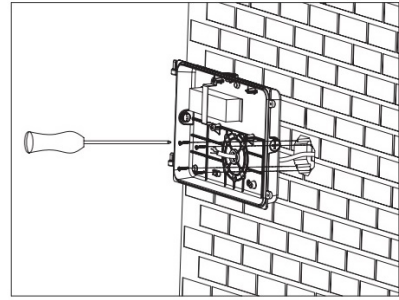
Product Parameter

Part Number	HL-WPA40	HL-WPA60	HL-WPA80	HL-WPA100	HL-WPA120
Wattage	40W	60W	80W	100W	120W
Luminous Efficacy	130lm/w				
CCT	3000K/4000K/5000K/5700K				
CRI	Ra>70, Ra 80				
Beam Angle	90°X120°				
Input Voltage	100-277Vac , 50/60Hz				
IP Rating	IP65				
Lifetime	50,000hrs				

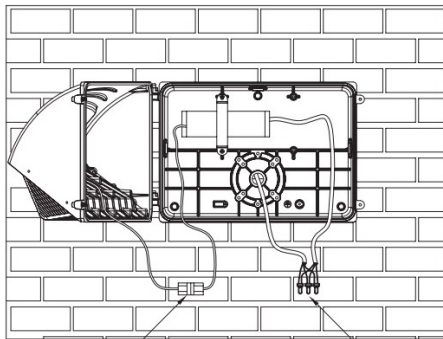
INSTALLATION MANUAL



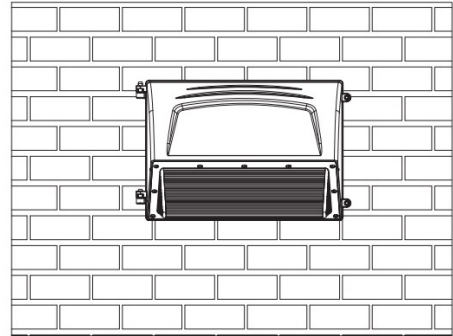
1. Create 4 holes to match the existing hole pattern of the junction box in the wall.



2. Run the main power wire from the water-proof J-box through the middle hole, then lock the lampbody to the wall using appropriate screws.



3. Connect the AC wire.



4. Use a suitable screwdriver to connect the reflector to the lampbody by tightening screws. The installation is finished.

Accessories list



WARNING

1. To avoid damage, falling, electric shock or fire, please do not modify the lamp or replace accessories without confirming with the supplier first.
2. Please authorize only qualified personnel to install the lamp and ensure they follow the instruction manual. Any improper installation might cause falling, electric shock, fire, or other injury, damage or hazard.
3. Please disconnect power before installation or any maintenance of the lamp.
4. Please disconnect power if it begins to smoke or emit odors, since fire or electric shock may occur. Ask qualified person to inspect and maintain the luminaire.
5. Please do not dismantle the lamp without the supplier's authorization.
6. Please do not touch the power supply when the lamp is operating.
7. If the external flexible cable or cord of the luminaire is damaged, it should only be replaced by the supplier, a service agent or qualified person.



Turn power off before installation or disassembly.